

CONSTRUCTION & MAINTENANCE THROUGH BUILDING INFORMATION MODELING

Full Capabilities Statement



Environmental Construction Services, Incorporated

Tel (215) 904-5097
Fax (215)904-5691

3751 Island Avenue, Suite 205
Philadelphia, PA 19153

www.ecsi360.com
info@ecsi360.com

Table of Contents

Table of Contents

About Us _____	1
Services _____	2
General Construction / Construction Mgmt. _____	3
Mechanical Services _____	4
Energy and BIM Consulting _____	4
Service, Operations and Maintenance _____	4
Construction _____	4
Electrical Services _____	5
CMMS/Asset Management Integration _____	6
Lighting Services _____	7
BIM Services _____	8
Integrated Electronic BIM Process _____	10
Drone Inspections _____	11
Projects _____	12
University of Pennsylvania Leidy Building _____	13
Pennsylvania Convention Center _____	14
Faena Hotel Golden Woolly Mammoth _____	15
YOUBIM® IMPLEMENTATION _____	16
Key Projects _____	17
Safety _____	18
Capabilities Statement _____	19

“With rapid technological advances in the construction and fabrication industry, the market is ready for a new industrial revolution”

ECSI 360 FINANCIAL GROWTH



2015 Inc. 5000 Rank	#229
3-Year Growth	1,907%
2014 Revenue	\$7.3 M
Jobs Added	37

2015 INC. 5000 HONORS

4	Top Construction companies
6	Philadelphia Metro Area
3	Top Pennsylvania companies

About Us

Environmental Construction Services (ECSI360) is an 8(a) certified, construction company that differentiates itself from the rest of the competition using Building Information Modelling, Revit-to-Construction, and 3D Facilities Management practices. Our value proposition is derived from the eradication of duplicated efforts. We design, build, maintain and operate facilities using our proprietary fully integrated 3D software and hardware. Environmental Construction Services will counsel our clients with respect to the most optimal construction methods by creating a 3D model of their architectural, mechanical and electrical systems, seamlessly downloading those models into CNC machines, integrating design teams with multiple contractors, simultaneously providing real-time pricing and electronically delivering those models to a 3D interfaced asset management system. ECSI360 can achieve this task by effectively integrating Autodesk's Building Design Suite with Estimation, Fabrication, CAM and Asset Management Software.

ECSI360 was the Inc. 500 fourth fastest growing privately held construction company between 2011 and 2014 with 1907% growth. During that time, we were honored as one of the most technologically advanced companies in the Philadelphia region by the Greater Philadelphia Chamber of Commerce. It was also listed as the SBA Small Minority Business of the year for Eastern Pennsylvania. The organization significantly advanced its Building Information Modeling practices and the president is now a key note speaker representing best practices in BIM to Facilities Management. A U.S. Department of Energy hub utilized one of ECSI360's clients in combination with Penn State and Carnegie Mellon to demonstrate high impact energy efficiency on small commercial buildings. The mechanical system designed by ECSI360 which is currently in the patent process, reduced energy consumption by over 40%.

ECSI360 had countless other successful projects such as: Subaru's headquarters, Sixer's Practice Facility, Comcast Innovation and Tech Center, Design and Construction of the Dehumidification of the Anchorage Systems of the Walt Whitman Bridge, US Coast Guard, Sanofi Pasteur Laboratories, Geisinger Medical Center, Several Verizon Datacenters, and the design and construction of a \$16-million-dollar woolly mammoth, museum grade enclosure on South Beach, Miami.



Philadelphia Navy Yard Headquarters

Services

Fully Integrated Solutions

REVIT TO FAB, FAB TO CAM, CAM TO TOTAL STATION, REVIT TO EAM

“WHILE CONSTRUCTING AND MAINTAINING YOUR PROJECTS, WE KEEP THE DATA IN THE SOFTWARE NOT ON THE PLANS AND SPECS”



Duns #:042341385

Cage:7RKA9

8(a) Entrance: 2/1/2017

Primary NAICS:236220

Other NAICS Codes:

236116, 236210, 237110,
237130, 238110, 238120,
238130, 238140, 238160,
238190, 238210, 238220,
238310, 238320, 238330,
238340, 238350, 238390,
238910, 238990, 336611,
541310, 541330, 561210,
541513, 541611, 541618,
541690,

Headquarters Location

Environmental Construction Services, Inc.

3751 Island Avenue,
Suite 205,
Philadelphia, PA 19153

Phone: 215-904-5097

Ext.103

jriley@ecsi360.com

Bonding Capacity

- 5 Million / Project
- 14 Million Aggregate

Environmental Construction Services, Inc.
3751 Island Avenue,
Suite 205,
Philadelphia, PA 19153



Tel: (215) 904-5097
Fax: (215) 904-5691
Web: www.ecsi360.com
Email: info@ecsi360.com



Ayush Gupta

**Project Manager
Director of
General
Construction**

Phone: 215-904-5097

Ext. 202

agupta@ecsi360.com



General Construction / Construction Mgmt.

Environmental Construction Services, Inc. (ECSI360) specializes in construction of private, federal, state and local projects. Our in-house team has Subject Matter Experts, Energy Managers, Construction Managers, 3D BIM Modelers, Engineers and Architects that have an average 20 years of experience in retrofitting complex facilities.



Love Park Iconic Fountain Piping, Plumbing, Trenching and Excavation (Philadelphia, PA)

As one of the region's premier 3D modeling firms, we will work with our clients to provide design build services that will not only generate your budget and schedule for your up-front construction costs, but will also provide life-cycle services that will include accurate maintenance, operations and energy costs for the useful life of your assets. Our director of construction has 30 years of experience managing over \$1B dollars in federal construction projects in the United States and Internationally. Our team has experience with the following:

- Residential Construction – Single and multi-family housing units
- Commercial Construction – Mid and High Rise buildings, commercial offices, retail stores, casinos, parking garages, data centers
- SLED – Higher educations, public schools, hospitals, prisons, parks
- Federal – Institutional facilities, secured facilities, unmanned sites, etc.
- Industrial facilities – Food processing, pharmaceutical, manufacturing, etc.





Michael Brown,

CEO/President

Director of
Mechanical Service
and Construction

Phone: 215-904-5097

Ext. 102

mbrown@ecsi360.com



Florida Office Location

1924 Park Meadows
Drive,
Fort Meyers, FL 33907

Mechanical Services

Our firm offers and installs a vast range of products and services for commercial and industrial HVAC applications with a focus on energy efficient construction and BIM to FM solutions. Our services division provides design-assist engineering, construction, energy and facilities management services throughout the country. The Mechanical group is divided into three business units:

- Consulting
- Service O&M
- Construction



Cozen O'Connor Liberty One Relocation (2nd Tallest Building in Philadelphia 2015)

Energy and BIM Consulting

ECSI360 utilizes cutting edge 3D CAD software, total stations, scanning equipment and drones to coordinate and layout complex projects before any resources are deployed to a jobsite. This technique allows us to save much needed time while significantly reducing construction costs. In addition, the act of laying out an entire facility into a 3D model allows our in-house design engineers and energy modelers to provide our clients with systems that provide the highest net present value while ensuring energy resilience and efficiency.

Service, Operations and Maintenance

To ensure a stable and continuous workload, our firm secures preventative maintenance, service and/or long-term operations agreements with our clients. Through a seamless integration between the as-built 3D drawings, asset management (Infor, Maximo, Etc.) and building automation systems, facility's maintenance personnel can be significantly streamlined through a 3D control center that can be managed remotely.

Construction

Our construction group has installed mechanical systems for many high profile clients throughout the country. With our in-house pipefitters, sheet metal workers, plumbers and electricians, our mechanical group pays close attention to quality and on-time delivery. Furthermore, we accentuate our field labor with a strong engineering back office with a high level of proficiency in 3D design, construction and maintenance.



Michael Causer,

**Director of
Electrical Services
and Facilities
Management**

Phone: 215-904-5097

Ext. 207

mcauser@ecsi360.com

Electrical Services

Our firm is successful in the master-planning of substation maintenance, marine electrical, commercial buildings, facility management, and more. We specialize in efficiency and effectiveness of maintenance activities, using a Computerized Maintenance Management Software (CMMS). This includes planning, scheduling, and monitoring of work orders and maintenance needs.

ECSI's field services consist of: troubleshooting, field engineering liaison and inspection, commissioning and checkout, customer representation at acceptance testing of equipment, preventive maintenance programs.

Marine Electrical:

Repair and installation of marine vessels, new builds, ship repairs, sea or dry docks.

Thermography:

Substations, transmission systems, switchgear, motors, variable speed systems, HVAC, boilers.

Supervisory Control and Data Acquisition System (SCADA):

Design systems, evaluate systems, audit systems, and implement systems.

Microprocessor Relay Settings: Programming of various vendors' settings, like SEL, Schneider, GE, Basler, ETC. Other services provided are coordination study input

Surveillance System:

Sales and installation, services of.

ARCGIS/GPS:

Utilities systems upgrades from overhead to underground systems.

Communications:

Inside/outside plant installation, fiber optic splicing, installation, data network setup.

Power Plants:

Maintenance, testing and record keeping in a computer maintenance management system (CMMS).

Environmental Construction Services, Incorporated provides the following electrical services:

- Commercial Electrical - NAICS Code: 238210.
- Marine Electric and Maintenance - NAICS Code: 336611
- Local Area Networks (LAN)
- Computerized Maintenance Management Systems (CMMS)
- Preventative Maintenance planning, servicing and scheduling
- Metering - Electrical meter installation, service and repair
- Substation Testing
- Engineering Services - BIM 3D design and layout
- UPS Units - from 120 Volts Single Phase to 480 Volt 3 Phase, from 5KW to 1 MW
- Labor Support –
- Utility Company Support
- Outside Plant



Jackson Mohr

**Director of Asset
Management
Integration**

Phone: 215-904-5097
Ext. 103
jmohr@the360goc.com

CMMS/Asset Management Integration

Through our Mentor/Protégé (Pending) company (SMS360) with Strategic Maintenance Solutions, our firms use cutting edge technology to effectively manage the assets of facilities. SMS360 is committed to the success of every customer worldwide. We leverage the experience and unique perspective that comes with providing reliability engineering consulting for the world's leading manufacturing brands to provide world class support, training and professional services.

EAM Implementation (Asset Management) SMS360 has extensive experience successfully partnering with our clients to improve existing or deploy new innovative Enterprise Asset Management (EAM) methodologies and applications.

Quality & Compliance SMS360 employs a staff of validation consultants with extensive experience in Life Science EAM systems compliance validation allowing clients to meet CMMS implementation goals utilizing a single professional service provider.

Mobile Solutions SMS360 moves asset management technology into the field through the use of mobile devices. Go paperless and improve current maintenance practices by fully integrating your workforce into your EAM.

Reliability Services SMS360 evaluates your existing programs to improve the reliability of your facility assets.

Calibration Services Calibration consulting services allow clients to meet EAM/ERP implementation goals while integrating Calibrated Asset Management with your selected system. This offers a single platform for the tracking of all maintenance activities.

Long Term Support SMS360 provides remote support for more than 1000+ users throughout North America and Europe offering our customers industry leading Maximo expertise in the implementation of EAM and ERP systems for the Life Sciences and Biotechnology industries. Take advantage of SMS's industry-leading "eVailable" EAM help desk.

Strategic Technical Solutions Many of SMS' clients' success depends directly on the EAM support our consultants provide on a daily basis. With the on-site service, Strategic Technical Solutions, we provide a framework of support giving our clients the ability to allocate their resources more efficiently.

Training + Consulting SMS360 has the expertise and hands- on experience to train our clients' maintenance, operations, and engineering personnel with deep knowledge and skills to make impressive enhancements to their facilities' performance.

SMS Cloud Services As an IBM Maximo Business Partner and an IBM Maximo Application Solution Provider, we bring our unparalleled cloud-hosting capabilities to IBM Maximo's services. This combination creates an EAM that's stable, simple and strong.



Lighting Services

MADE IN USA LED LIGHTING

Through our inhouse partner, Independence LED Lighting we are your professional lighting solutions partner for American made LED manufacturing experience and insight.

Our team manufactures award winning, made in USA LED lighting technology from our Pennsylvania production facilities. We bring you expertise from auditing to sourcing and from rebate administration to financing. Our technology is Buy American Act (BAA) Compliant. We also enhance our offerings through strategic relationships with ILED certified companies. Independence LED delivers reliable and cost-effective LED lighting solutions. Period.

Our team is one of the very first authentic US manufacturers of commercial LED light fixtures, with installations ranging from the State Department to the US military to the Fortune 100. The technology saves 50% or more over traditional lighting, lasts five times longer, is toxic free, and is also smart control enabled for dimming, occupancy sensing, natural light harvesting, data capture, security and energy resilience including direct current (DC) microgrid integration. In 2010, Independence LED brought the manufacturing from China to southeastern Pennsylvania. We offer the industry leading 10-year warranty.

TESTIMONIALS

US Marine Base Quantico: – Steve Hodge – Service Disabled Veteran Minority Small Business Owner – Alexandria, Virginia

“In the United States government there is so much electricity being used to light government buildings everywhere. Millions of square footage of space is being lit with fluorescent lighting. It really makes sense to change out those lights with LED lights to save the government millions of dollars a month. As a service disabled veteran owned business, my job is really to go after government contracts in a way to provide a support, to provide a service, to provide something that can reduce the amount of money being spent on everything else other than the actual war fighter. We need money to go to the war fighter to pay for guns, to pay for bullets, to pay for food, to pay just to get the military over to the fight. So, my job is to help reduce costs that aren't related to that. If we're spending money on fluorescent lights, we're wrong! On Independence LED products that are Made in America – We want to rely less on foreign products and less on foreign energy sources. It's part of our national security effort. It's positive, and it's important” – Steve Hodge secured the Independence LED installation at U.S. Marine Corps Base Quantico as one of the very first U.S. military facilities to retrofit with LEDs and made in America technology.



*Philadelphia, VA
Hospital Blood Lab
Renovations*

Using BIM to
coordinate complex
HVAC Systems.

BIM Services

Improved Understanding of Design Intent

Through the unification of the design team, BIM program manager and construction manager an owner is given a clear understanding of design implications on the lifecycle of a project. Initial capital costs, operating expenses, life of equipment, energy efficiency, maintenance and future renovation implications can be determined to maximize the financial gain of an owner.

Cost Control and Predictability

An owner will be able to reduce the amount of costs associated with the reengineering of systems to meet a given budget. This is accomplished by sending electronic MAJ files to a select group of contractors during the bid phase. These files allow for instant and accurate pricing that can help the design team conduct life cycle costs without a lengthy bid process.

An owner can purchase equipment with confidence since the BIM model will allow for ease in installation and maintenance. Markups on equipment, which are currently realized by MEP contractors will flow directly to the owner. Furthermore, an owner can have the construction manager receive bids directly from 3rd and 4th tier subcontractors to eliminate multiple markups, due to the control provided by the BIM Program Manager.

Schedule Reduction and Improved Project Quality

Aggressive project schedules can be created since the owner will have real-time estimates comprised of man hours for their projects. The 3D BIM model, since it will have construction and fabrication grade accuracy, can be used to track schedule completion and single out any contractor that is falling behind the schedule. This is done by forcing the contractors to highlight the areas that they have completed, in the BIM model, during each payment cycle. The highlights will then provide the owner with material, labor hours, equipment and all other items that will help in the reduction of overbilling while increasing productivity.

Duplication of efforts are eliminated since the design and construction models are created simultaneously. This reduces multiple hours of workflows since the contractors will only need to verify that the models meet their construction standards and will in turn be able to fabricate and install directly from the model. In addition, factory prefabrication of complex systems will reduce the construction time and costs of trying to perform the work in the field.

Recursive self-improvement, meaning that every project performed using this methodology will be faster, more accurate and less costly than the previous project will result from the owner

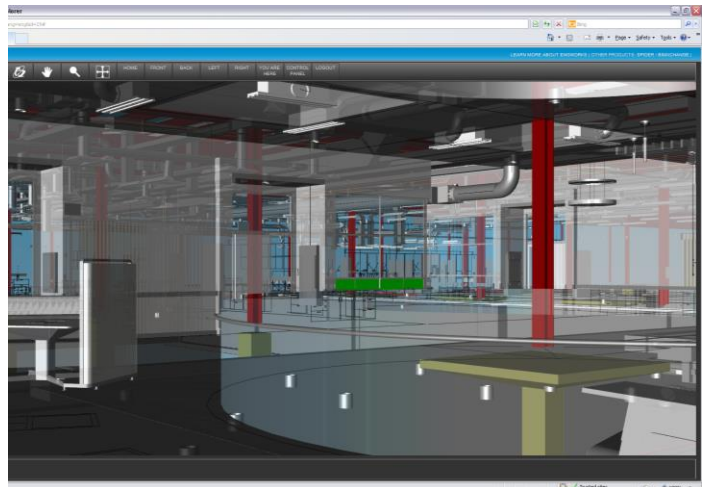
having data within one database that they can analyze to eliminate bottle necks and inefficiencies.

Change Order, RFI and Waste Reduction

The use of an integrated team allows for the professional community to perform to their strengths, designing a building, while the contracting partners focus on constructability and cost. Many of the errors that result in change orders, RFI's and waste are a product of junior level engineers drafting projects without any installation and service experience. In addition, many of the costly errors in system functionality occur when contractors value engineer in weeks what engineering professionals took months to design. A collaborative approach eliminates most of these errors by utilizing the strengths of each team member and eliminating the weaknesses.

Increased Maintenance and Operating Efficiency

A unified model can be returned to the owner allowing for maintenance, operations and future retrofits to be quickly modeled and priced since all data for submittals, as-buids and O&M manuals can be found in one location. Furthermore, remote 3D service and maintenance of buildings is achievable by merging the automation systems with the 3D as-built models.



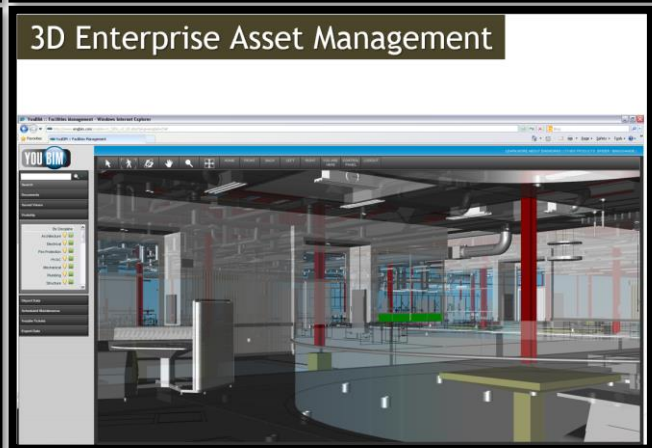
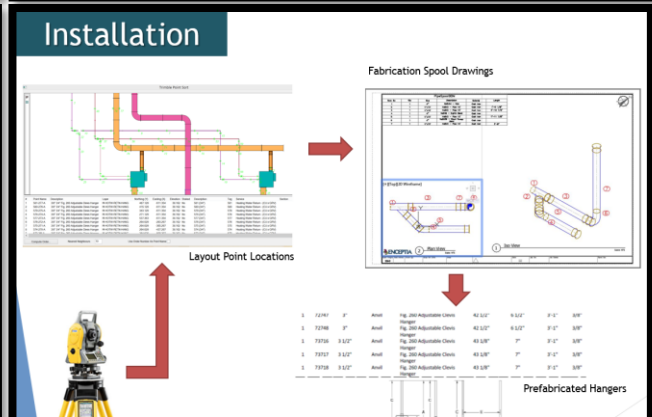
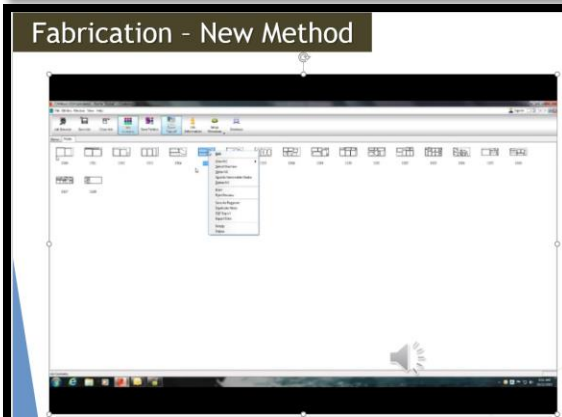
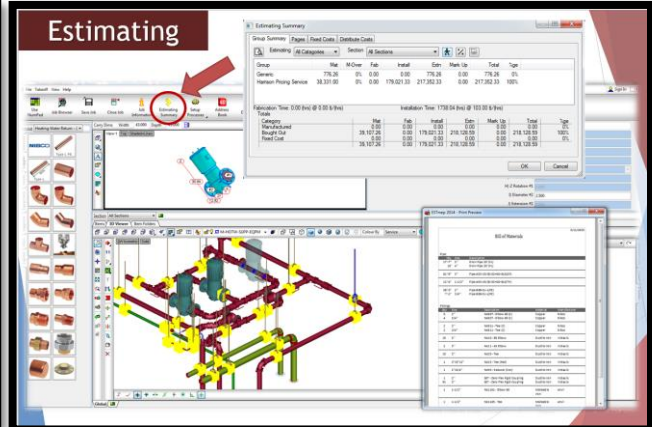
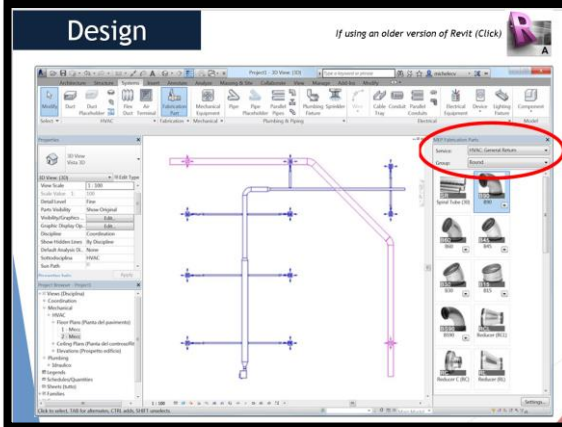
Owner Control and Purchasing Power

Finally, the owner is left with total control of a project to the point where they may commoditize the market. With a fully integrated BIM system the only factor that the owner will not control is competitive pricing. Nevertheless, the data in the BIM model will allow the owner to understand what types of costs and efficiencies are being realized in various geographic segments.

Integrated Electronic BIM Process

The future of construction is finally here!

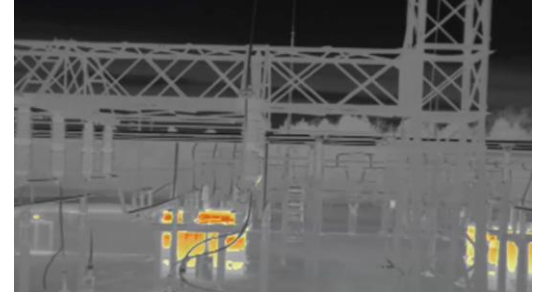
Design, Estimation, Fabrication, Installation, Maintenance can all be done using Autodesk compatible software solutions.



ECSI 360 is at the cutting edge of integration and has proven it on multiple high-profile projects ranging from \$250K to \$2 Billion dollars.

The former art of "roundtripping" (electronically converting engineering drawings into fabrication parts), is now all done simultaneously using Autodesk Building Suite 2018.2®, Fabrication, Estimation, CAM and our Proprietary Database and YouBIM software with a Maximo Extension.

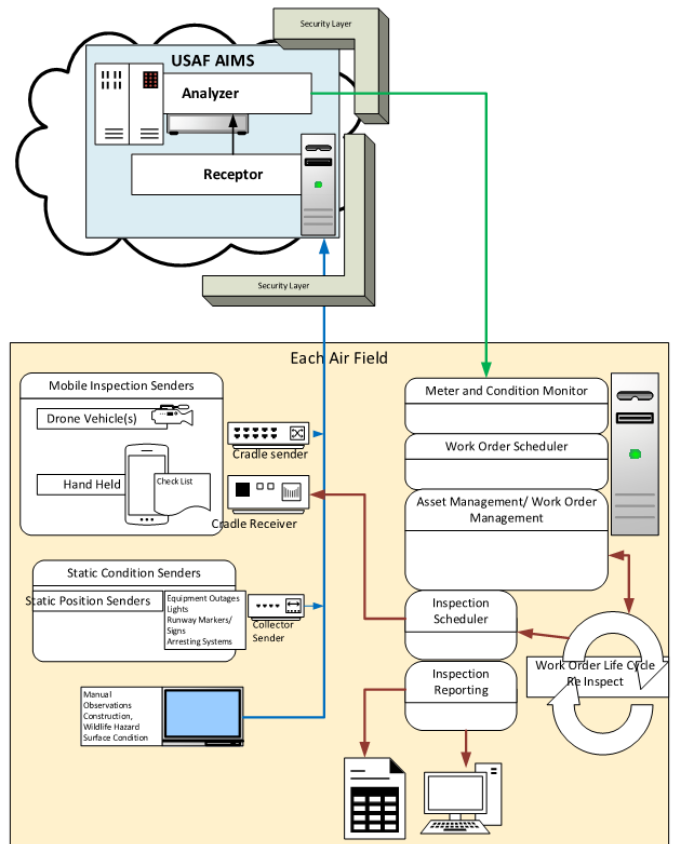
Drone Inspections



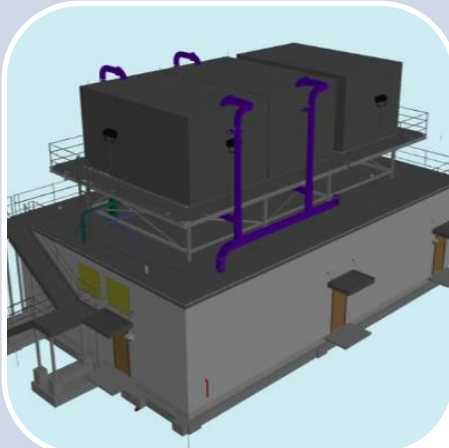
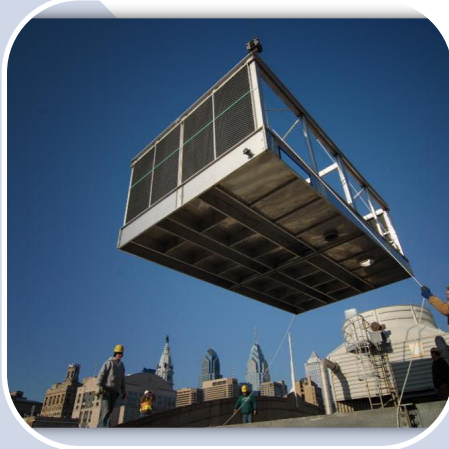
SMS 360, integrates drone information with Enterprise Asset Management systems. Below is a list of the information that we obtain:

- Visual information
- OrthoPhotos
- PhotoMosaic
- 3D modeling
- Thermal
- High resolution images.
- Post production techniques

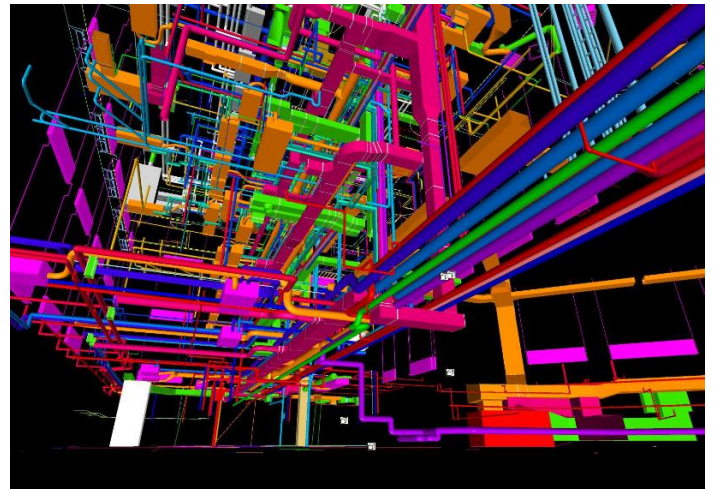
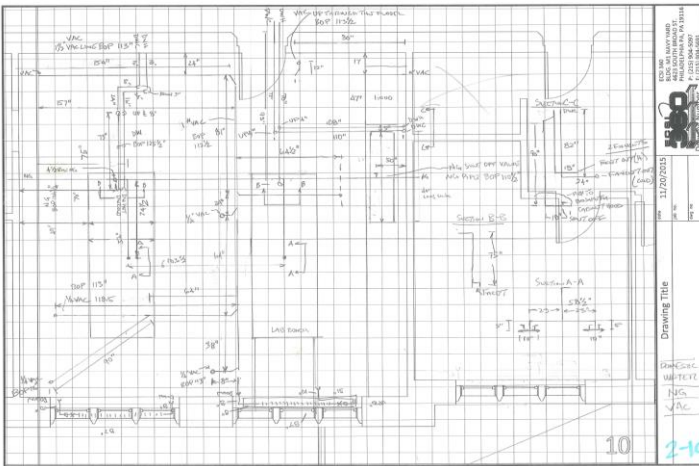
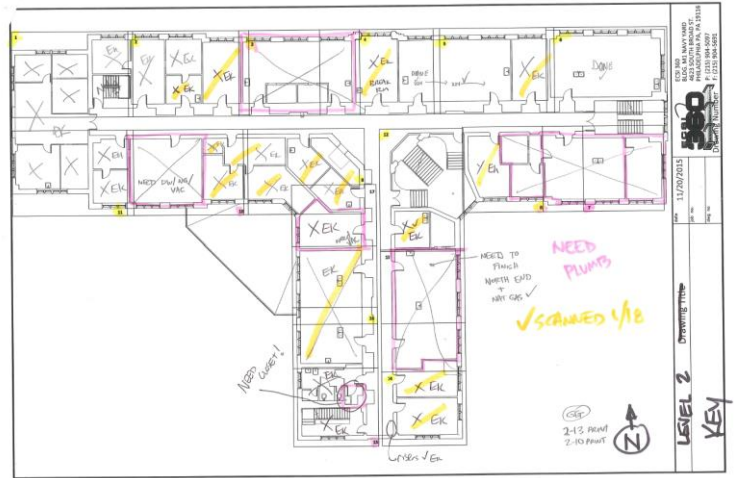
To the right is a flow chart of information gathering using drones for Air Field Inspections.



Projects

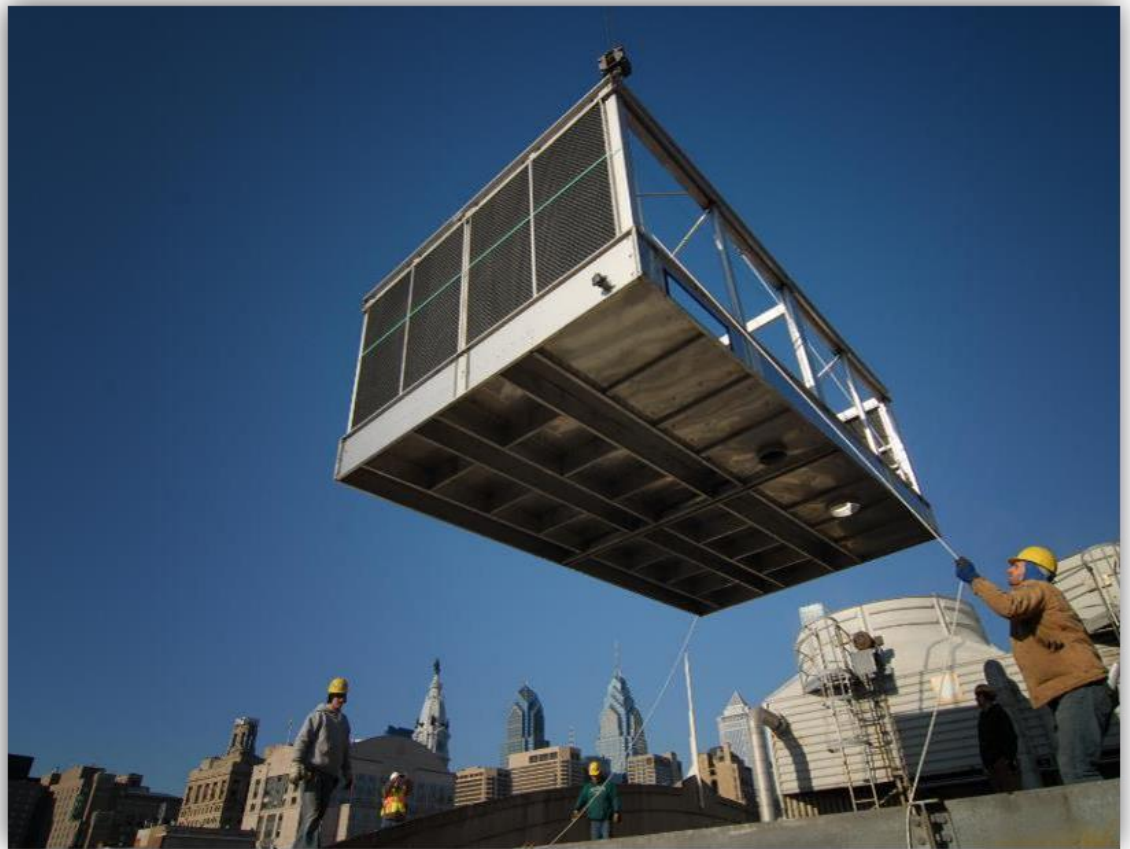


University of Pennsylvania Leidy Building



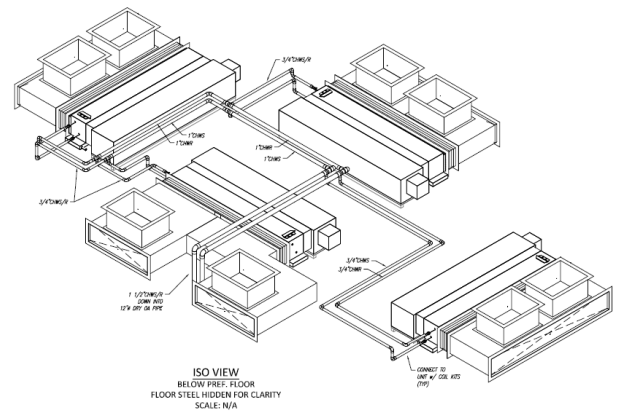
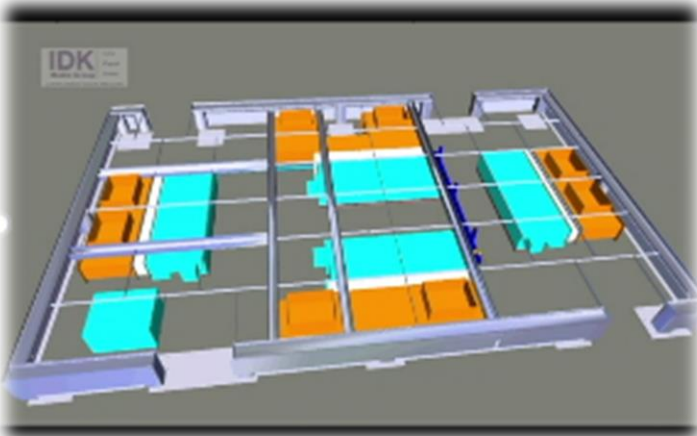
The University of Pennsylvania Leidy Building was built in the early 1900s. Systems have been retrofitted over the past one hundred years without a total demolition. As a result, old mechanical and electrical systems were not removed and consequently did not allow space for new equipment. Our company used new (Autodesk Building Suite) and old (A Size Graph Paper) technology to model the entire facilities MEP systems in less than 14 weeks, without the use of a scanner!

Pennsylvania Convention Center



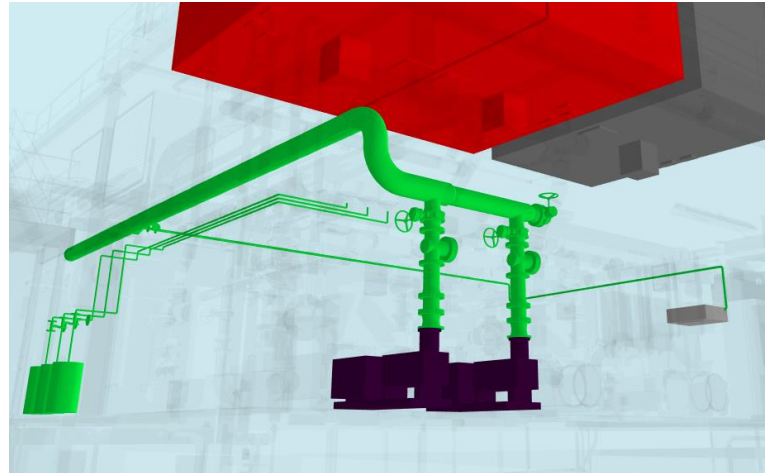
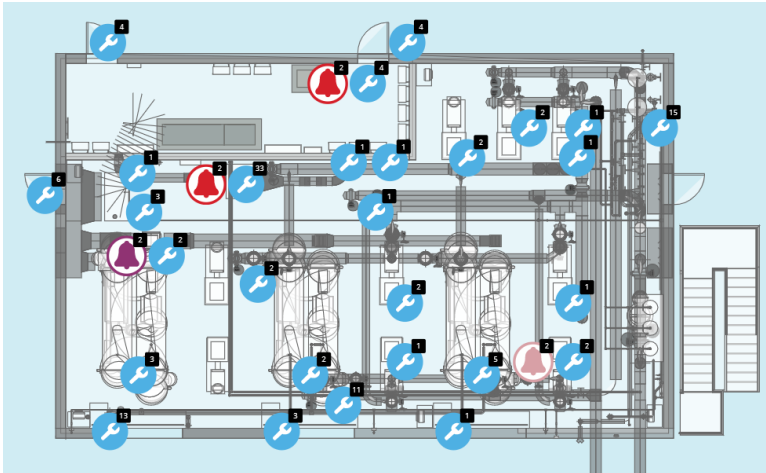
During the busiest convention season that included the Auto, Flower and Lighting Shows, Element Mechanical replaced three cooling towers totaling 6000 tons of cooling. The project scope consisted of demolition, electrical, piping, sheet metal, building automation and engineering (structural, mechanical and electrical). The challenge with the project was that the Convention Center required that at least two cooling towers remained operable during the entire retrofit. The project was completed on schedule and within budget.

Faena Hotel Golden Woolly Mammoth



On October 31st, 2015 while “trick or treating” with his daughter our CEO was contacted by representatives from the FAENA Hotel in South Miami Beach to build a museum grade cooling and dehumidification system for the \$2Billion dollar hotel’s landmark prehistoric Woolly Mammoth show piece. In 3 weeks, ECSI360 designed, built and installed the system! The Woolly Mammoth was remotely maintained for the curator using a cutting edge electronic monitoring system for over a year.

YOUBIM® IMPLEMENTATION



YOU BIM BIM for PM Simple Demo User Guide Send feedback YouBIM User

COOLING 2D 3D ASSETS WORK ORDERS BMS IM

Demo Site Central Plant First Floor All Rooms

Assets list FUT_CT x Clinic-MECH-1st... Clinic-MECH-1st... +New Asset

FUT_CT
Demo Site > Central Plant > Roof > Site_000

2D View 3D View

Description: Cooling Tower
 Serial number:
 Installation Date:
 Warranty Start Date:
 Tag Number:
 Bar Code:
 Asset Identifier:

TYPE DATA ASSET DATA BMS SYSTEM DATA WORK ORDERS DOCUMENTS PARTS

Type: CT_Future_Marley NC8409_steel Description:
 AssetType: F Manufacturer: SPX Cooling Technologies

UPDATE

YOU BIM BIM for PM Simple Demo User Guide Send feedback YouBIM User

COOLING 2D 3D ASSETS WORK ORDERS BMS IM

Demo Site Central Plant All Floors All Rooms

Work Orders List please shut dow... Please check AHU

ALL WORK ORDERS 171 Show in Model

STATUS	DESCRIPTION	DUE DATE	PAST DATE	ASSIGNEE
New	Fuera de servicio No esta funcionando	Apr 15th 23:00hs	-	YouBIM User
New	Not working properly Needs repaired	Apr 12th 10:00hs	2 Days	YouBIM User
New	Not working needs replaced	Apr 17th 23:00hs	-	YouBIM User
New	Fix Hardware Fix handle	Apr 13th 08:52hs	1 Days	Axel Kruger
New	Needs repair Not working properly	Apr 10th 13:52hs	3 Days	YouBIM User
New	General Check blah blah	Apr 10th 23:00hs	3 Days	Axel Kruger
New	please shut down valve major leak	Apr 3rd 12:51hs	10 Days	Axel Kruger
New	Fix Hardware Fix handle	Apr 6th 08:52hs	8 Days	Axel Kruger
New	Needs repair Not working properly	Apr 2nd 23:00hs	11 Days	YouBIM User
New	Fuera de servicio No esta funcionando	Apr 1st 23:00hs	12 Days	YouBIM User

Through our subsidiary company with Strategic Maintenance Solutions, SMS 360, we can seamlessly integrate our 3D models into asset management systems. The illustrations above show the work orders on a 2D model with a direct link to the 3D rendering associated will all systems attached to the work order. The equipment documentation is also linked and the status of the work order is listed. Our proprietary software integrates with most EAM systems, but we currently have agreements with Maximo and Infor.

Government Clients

Prime



US Army Corps of Engineers®

Subcontractor



Key Projects

	Project	Value	ECSI 360
1	PHILADELPHIA VA HOSPITAL BLOOD LAB RENOVATIONS	\$ 3.2M	X
2	Cozen O'Conner Office Relocation-One Liberty Place	\$ 1.83M	X
3	Two Liberty Place (BIM)	\$ 100K	X
4	Philaport Vehicle Procession Facility	\$ 8.9M	X
5	University of Pennsylvania-Neural and Behavioral Science Building	\$ 1.7M	X
6	University of Pennsylvania-SPE Ground Imaging	\$ 235K	X
7	University of Pennsylvania-SPE Concourse	\$ 725K	X
8	University of Pennsylvania-University Health System	\$ 67K	X
9	Becket Gardens (BIM)	\$ 125K	X
10	AT & T Data Center Upgrades	\$ 150K	X
11	Walt Whitman Bridge Dehumidification Project	\$ 379K	X
12	Bonland Sheet Metal Office Relocation	\$ 45K	X
13	Bridesburg Elementary School	\$ 750K	X
14	Lincoln Financial Field	\$ 170K	X
15	Verizon-State College HVAC Upgrades	\$ 259K	X
16	Research for Human Development (RHD)	\$ 723K	X
17	Geisinger Hospital Upgrades	\$ 144K	X
18	US Coast Guard	\$ 126K	X
19	Fringe Arts	\$ 165K	X
20	Good Stuff Eatery	\$ 96K	X
21	Vita-Line Pet Foods (Maintenance Contract)	\$ 360K	X
22	Love Park Fountain	\$ 2.9M	X
23	Naval Support Activity Support Maintenance Contract (Multiple BLDGS)	\$ 821K	X
24	PHFA-Rittenhouse School Apartments	\$ 111K	X
25	VAMC-Interventional Radiology	\$ 500K	X
26	Gordon Street Apartments-PHA Project	\$ 360K	X
27	Rutgers Writers House (BIM)	\$ 500K	X
28	Philadelphia Convention Center Cooling Tower Upgrade	\$ 1.6M	X
29	Philadelphia Navy Yard Energy Improvements	\$ 106K	X
30	Ingles House	\$1.2M	X
31	Saul Restaurant at the Brooklyn Museum	\$750K	
32	The Lindley	\$13.7M	X
33	Building 661 and 7R Penn State Navy Yard (BIM Consulting)	\$50K	X
34	Delaware Valley High School (BIM Consulting)	\$45K	X
35	Geisinger Medical Center Woodbine (BIM Consulting)	\$150K	X



Philadelphia VA Hospital 2013

Safety

Environmental Construction Services is committed to ensuring its employees return home to their families in the same condition that they come to work. To guarantee fulfillment of this pledge, we require continuous safety training for all ECSI 360 employees. Our commitment begins at the senior levels—all executives, foreman, superintendents and office personnel are required to complete a 30-hour OSHA training course and earn their certification. Our employees will each maintain high safety standard by remaining focused on and dedicated to ensuring our workforce's well-being.

Capabilities Statement


Rutgers University Writer's House

CAPABILITIES STATEMENT

Pennsylvania Convention Center Cooling Tower Replacement, Philadelphia, PA



**USING DISRUPTIVE TECHNOLOGY TO SAVE
TIME & MONEY WHEN CONSTRUCTING,
MAINTAINING & OPERATING FACILITIES!**

DUNS: 042341385 **CERTIFICATIONS**
CAGE: 7RKA9 8(a), DBE, MBE

NAICS CODES:
 238220 PLUMBING AND HVAC
 236000 CONSTRUCTION OF BUILDINGS
 237110 WATER AND SEWER LINE CONSTRUCTION
 238210 ELECTRICAL CONTRACTOR
 541330 ENERGY MANAGEMENT CONSULTING
 541340 DRAFTING SERVICES
 561200 FACILITY SUPPORT SERVICES

KEY PERSONNEL
 MICHAEL BROWN (EXT 102) – CEO / BIM MGR
 LOUIS TIERNO (EXT 101) – CFO
 AYUSH GUPTA –PROJECT EXECUTIVE
 MICHAEL CAUSER (EXT 203) – DIR OF FACILITIES

PATENTS (PENDING):
 US2015035845: HVAC AIRFLOW OPTIMIZATION

BONDING:
 4 MILLION PER PROJECT, 12 MILLION AGGREGATE

ANNUAL REVENUE: \$10,000,000

CONTACT INFO
 ECSI360 – JEN RILEY (EXT 103)
 3751 Island Avenue, Suite 105
 PHILADELPHIA, PA 19153
 P: 215-904-5097 F: 215-904-5691

EMAIL: JRILEY@ECSI360.COM
 WEB: WWW.ECSI360.COM

ENVIRONMENTAL CONSTRUCTION SERVICES, INC.



WWW.ECSI360.COM

COMPANY SUMMARY

Environmental Construction Services, Inc. is a construction, energy and facilities management firm based out of Philadelphia, Pennsylvania. We fulfill your construction needs through quality and service with a focus on safety, integrated project delivery, and energy efficiency. ECSI360 helps building owners and facilities managers design, build or retrofit, and maintain energy-efficient facilities within specified budgets. Our project managers, design engineers, and energy experts average over 25 years of construction and maintenance experience.

CORE COMPETENCIES

- DESIGN BUILD CONSTRUCTION
- ENERGY MANAGEMENT
- SUSTAINABILITY
- BUILDING INFORMATION MODELING (BIM)
- ASSET MANAGEMENT

- MECHANICAL, ELECTRICAL AND PLUMBING CONTRACTING
- FACILITIES MANAGEMENT
- PERFORMANCE CONTRACTING
- GENERAL CONTRACTING
- VALUE ENGINEERING
- FACILITIES MAINTENANCE & SERVICE

CORPORATE EXPERTISE

ECSI360 is among the few advanced and experienced construction companies in the country that have effectively delivered true BIM to FM integration, which is the art of creating design documents, seamlessly converting them to shop and erection sets, and then transferring all of the data electronically into an asset management system.

NOTABLE PROJECTS

PROJECT NAME	AMOUNT
COZEN O'CONNOR LIBERTY ONE RELOCATION	\$1.6 MILLION
PHILADELPHIA VA – AC19 & BLOOD LAB RENOVATION	\$2.9 MILLION
COMCAST TECH AND INNOVATION CENTER	\$4.1 MILLION
PHILAPORT VEHICLE PROCESSING FACILITY	\$8.9 MILLION
PENNSYLVANIA CONVENTION CENTER COOLING TOWER	\$1.7 MILLION

ACHIEVEMENTS: SBA 2014 Eastern PA Minority Small Business of the Year, Greater Philadelphia Chamber of Commerce Technological Excellence Winner 2015, Goldman Sachs 10,000 Small Businesses Graduate.



Philadelphia VA Hospital

ECSI 360 FINANCIAL GROWTH



2015 Inc. 5000 Rank	#229
3-Year Growth	1,907%
2014 Revenue	\$7.3 M
Jobs Added	37

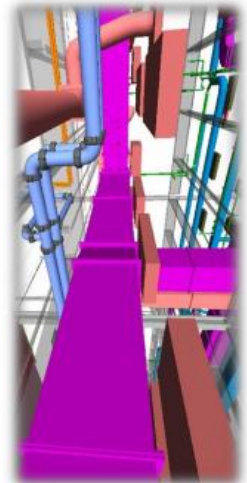
2015 INC. 5000 HONORS

- 4 Top Construction companies
- 6 Philadelphia Metro Area
- 3 Top Pennsylvania companies



OUR APPROACH TO CONSTRUCTION USING BUILDING INFORMATION MODELING

ECSI 360 utilizes engineers and CAD tradespeople with heavy experience in construction to quickly determine the design intent of the engineering community while understanding the field conditions and cost implications of various design options. Our firm will work with an owner to ensure that three key members of their team: Designer, General Contractor and Facilities Operator are working together in a unified model to provide real-time answers through the use of pin point accurate 3D Models. The linear approach of construction that many times requires several iterations between the design and contracting communities in order to deliver a project on time and within budget are streamlined through a more collaborative approach. Our methodology can only be achieved with the use of integrated software packages and databases that allows engineering to effectively model while the construction can plan, estimate, construct, manufacture and maintain facilities with minimal to no duplication of efforts.



3D APPROACH TO FACILITIES MANAGEMENT (FM)

ECSI360 utilizes a 2D/3D asset management integration software that allows for as-built models to be viewed using your web browser. Having a visual interface to complex asset management systems significantly reduces hours spent trying to find and adequately service work orders. Furthermore, building automation systems, documents, O&M manuals and warranties can easily be viewed from the interface allowing for better organization, planning, inventory management and work order scheduling. Future retrofits are also simplified since all documentation is housed in one location.



Golden Mammoth, Faena Hotel Miami, FL



Corporate Headquarters, Philadelphia Navy Yard



Cooling Tower Replacements, Philadelphia

ECSI 360 – “Using tomorrow’s technology to solve today’s problems”



Environmental Construction Services, Inc.
3751 Island Avenue,
Suite 205,
Philadelphia, PA 19153



Tel: (215) 904-5097
Fax: (215) 904-5691
Web: www.ecsi360.com
Email: info@ecsi360.com